

Newcastle City Hall

TECHNICAL SERVICES INVENTORY

City Hall – Main Concert Hall

SEPTEMBER 5, 2023
CITY OF NEWCASTLE
375 Hunter Street Newcastle NSW 2300

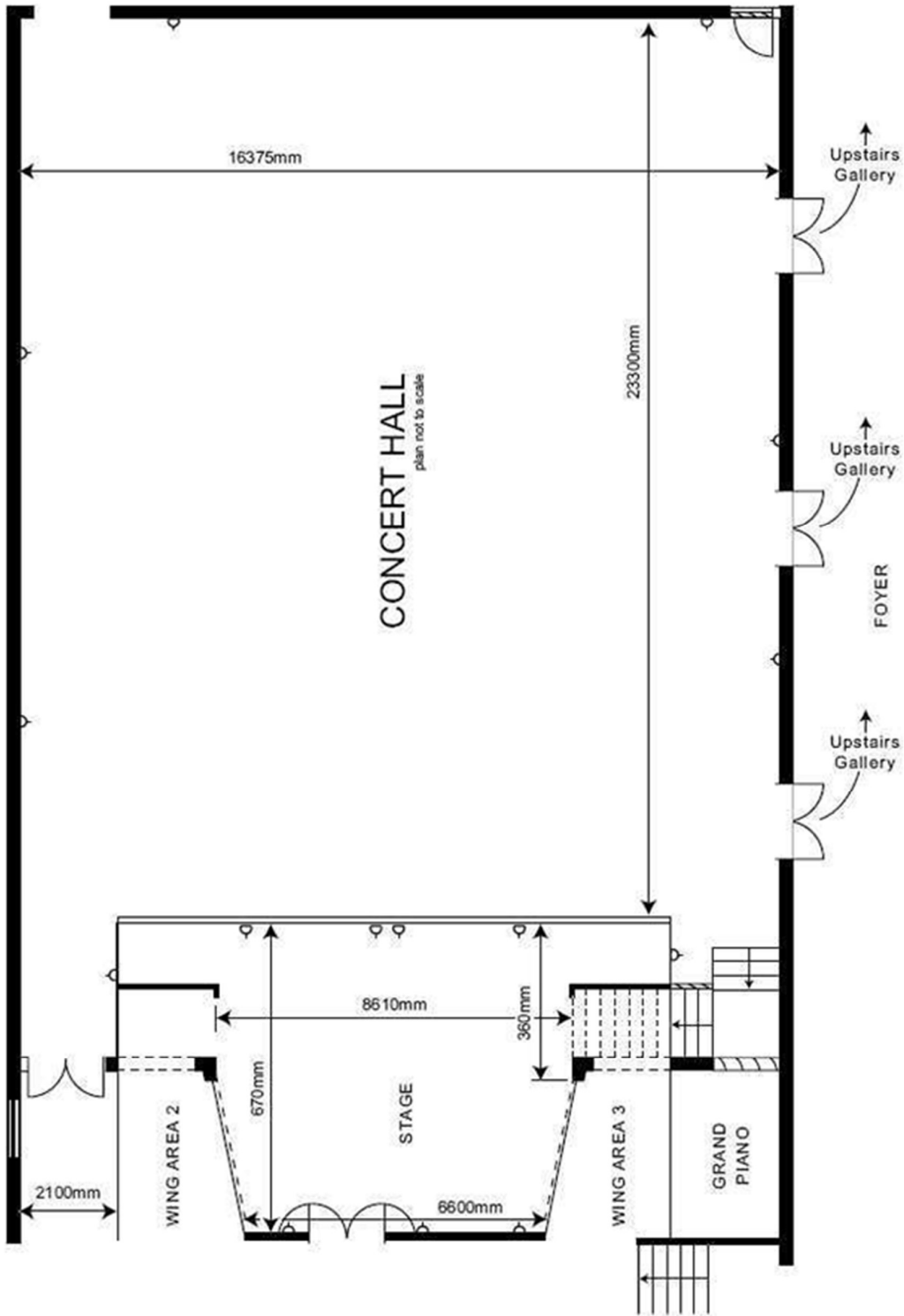


Contents

Stage & Stalls Plan	2
Stage Dimensions	3
Power / Dimmers / Lighting Control Desk / Equipment	4
Sound / Audio Visual / Seating and Capacities	5
Special Effects / Stage Managers Console	6
Dressing Rooms and Capacities / Other Equipment	6
Loading Facilities	7



Concert Hall - Stage & Stalls Plan



375 Hunter Street
Newcastle NSW 2300



Stage Dimensions

Stage Area

Maximum width DS	8510mm
Maximum width US	6600mm
Maximum depth	6700mm
Height above stalls floor	1400mm

Thrust Stage Area

Maximum width	11950mm
Maximum depth	2970mm
Height above stalls floor	1400mm

Stage Surface

Flat / sprung floor on timber rafters
Finish is polished hardwood

Stage to Rear Auditorium

Front edge of stage	23155mm
Back of stage	29800mm

Width of Auditorium

Front edge of stage	16020mm
---------------------	---------

Side Wing Area 2

Maximum width	1700mm
Maximum length	3700mm
Minimum width	1200mm

Side Wing Area 3

Maximum width	1700mm
Maximum length	3700mm
Minimum width	1200mm

Back Wall

Solid polished wood panels
Access to wing areas

Rigging

There are no rigging points above the stage

Other Measurements

Front of stage to rear stalls	22700mm
Front edge of gallery to rear stalls	7400mm
On stage edge of gallery to side walls	2750mm





Power / Dimmers

Power Supply

Main Power 100amps

This supplies Stage Dimmers / House Lights / GPOs

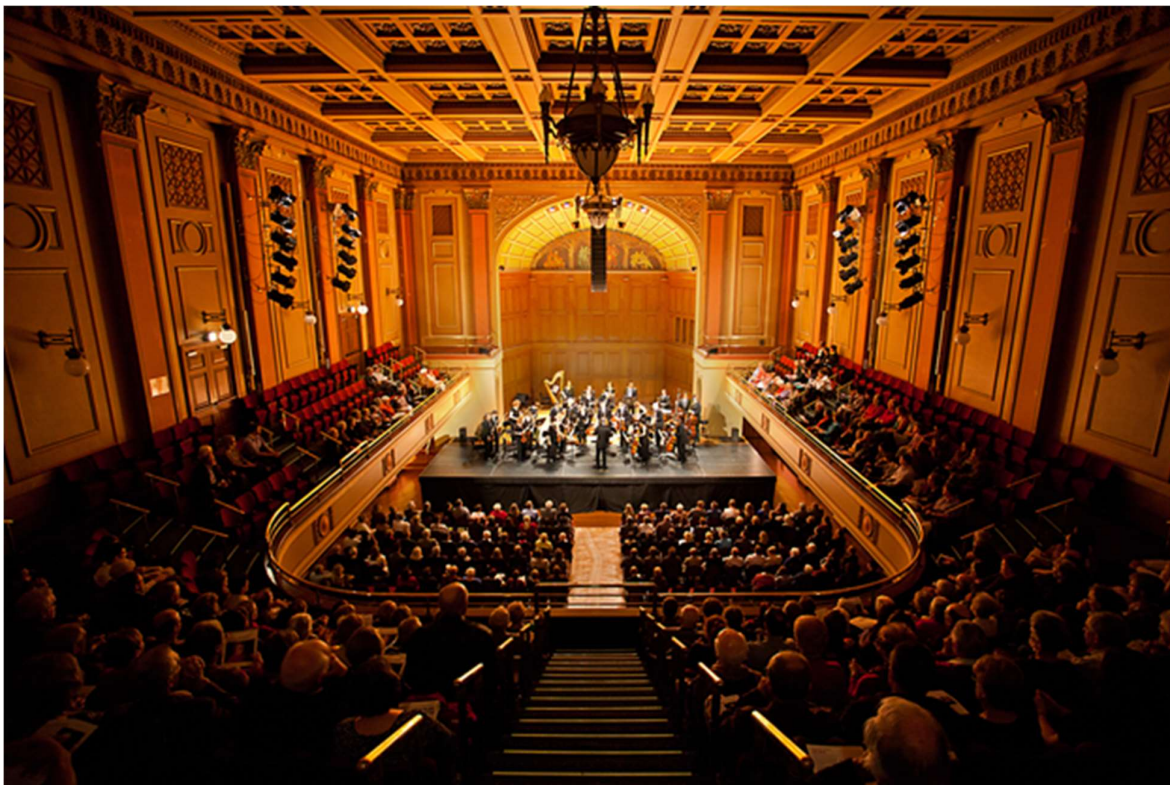
Road Power Hook Up

32 amp 3 phase located onstage in Wing 2

Lighting Control Desk / Equipment

Light Control Desk	ETC ION 1024 Channel with 20 fader wing
Dimmers	2 x LSC distros
Patch Outlets	Front of House 24 total, 6 per side booms Front of House Bar, 10 On Stage 8 at rear wall
Lamp Stock	6 x 1 Kw Pacific 12/28 profile 16 x ETC Source 4 19° Lustr 2 LED profile 14 x ETC D60 Lustre+ 5 x Ayrton Diablo moving head profile Various battery LED uprights available, please speak to technical services to confirm cost & availability.

NB: All lamps complete with bar clamp, Source-4's have shutter units and gobo holders



375 Hunter Street
Newcastle NSW 2300



Sound

Equipment List

1 x Yamaha MG16/4 mixer. 10 mic + 2 stereo channels.

1 x Midas M32R 32

1 x Midas DL16 Digital Stagebox 16in / 8 out

Various radio & cabled available pending availability.

Additional audio equipment is available. Please confirm availability with Technical Services.

P.A. System

Meyer M1D Line array

12 x M1D Curvilinear Array Speaker

2 x M1D-Sub Subwoofer

2 x UPJ front fill stalls

3 x UPM under balcony fill

2 x UPM front fill dress circle

4 x Quest QM-450A active foldback wedge

Talkback System

Jands talkback between stage, back of room & bio box.

There is also an XLR tieline between SM and Bio Box

Clearcom Tempest Wireless Master Station

2 x Clearcom Tempest Wireless Beltpacks

Audio Visual

1 x Stumpfl 12 ft 16:9 aspect fast fold monoblox 32 front or rear projection projector screen, must be ground supported.

1 x Epson 4500 ANSI lumen projector

Larger projectors and screens are available at additional cost. Please discuss cost & availability with Technical Services.

Seating

Maximum seating capacity – up to 757 (Stalls 432, Gallery 325)



Special Effects

Due to our fire safety policies for City Hall, no special effects, smoke or haze is to be used in the venue.

Stage Manager Console

Stage Manager Position located Prompt Wing
House Light Control
Sound Desk Control

Dressing Rooms

Dressing Room 1 Seats approx. 6 people
Mirrors / Counter / Sink
Dressing Room Paging
Toilets near by

Dressing Room 2 Seats approx. 6 people
Mirrors / Counter / Sink
Dressing Room Paging
Toilets near by

Other Equipment

Pianos 9ft Grand (D) Steinway tuned to A441
Tuning costs apply.

Risers (subject to availability) Up to 15 x Megadeck
Available in 3 heights – 185mm, 455mm, 605mm.
Max 5 units at each height
Please confirm availability with Technical Services.



Loading Facilities – Stage Loading Door

Stage Loading Door

Located on King Street

Stage is located one (1) floor up from street level

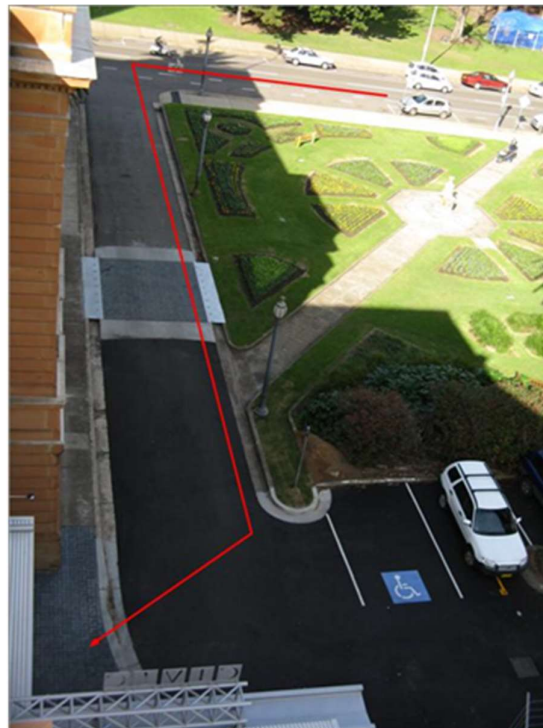
Small trucks only

Maximum Access Height

2470mm

Maximum Access Width

1440mm



375 Hunter Street
Newcastle NSW 2300



Loading Facilities – Stage Loading Door

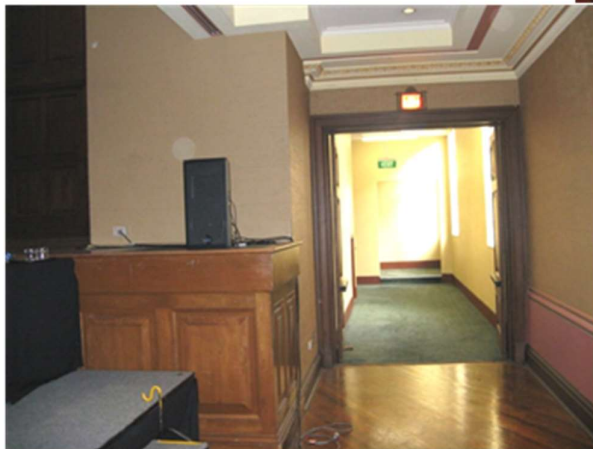
Stage Loading Door

Located on Christie Lane

Stage is located two (2) floors up from street level

Maximum Access Height in stairwell 2050mm

Maximum Access Width in stairwell 1600mm



375 Hunter Street
Newcastle NSW 2300

