

Civic Theatre

TECHNICAL SERVICES INVENTORY

Civic Theatre – Main Auditorium

NOVEMBER 7, 2023
CITY OF NEWCASTLE
375 Hunter Street Newcastle NSW 2300



Contents	Page
Seating and capacities	2
Dress Circle Seating Plan	3
Stalls Seating Plan	4
Vertical Stage Plan	5
Horizontal Stage Plan	6
Stage Dimensions	8
Rigging / Fly System	9
Orchestra Catwalk Truss	10
Auditorium Side View (Elevation) Plan	11
Hanging Plot	12
Stage Apron (Thrust) / Draperies	14
Power / Dimmers	15
Lighting Control Desk / Equipment / Data Distribution	16
Lighting Position / Dimmer / Circuits	17
Sound Desk / Equipment	18
UHF Wireless Microphones	21
Audio-Visual	23
Stage Management / Communications	24
Cameras / Dressing Rooms and capacities	24
Mezzanine / Orchestra Assembly Room / Green Room and capacities	25
Laundry / Production Office / Traps Room / Orchestra Pit	25
Loading Facilities	26
Pianos / Treads / Risers / Ladders / Chairs / Bar Stools / Music Stands	26

Seating

Maximum seating capacity – up to 1,447

Sound Mix Position # 1 – Centre of Stalls

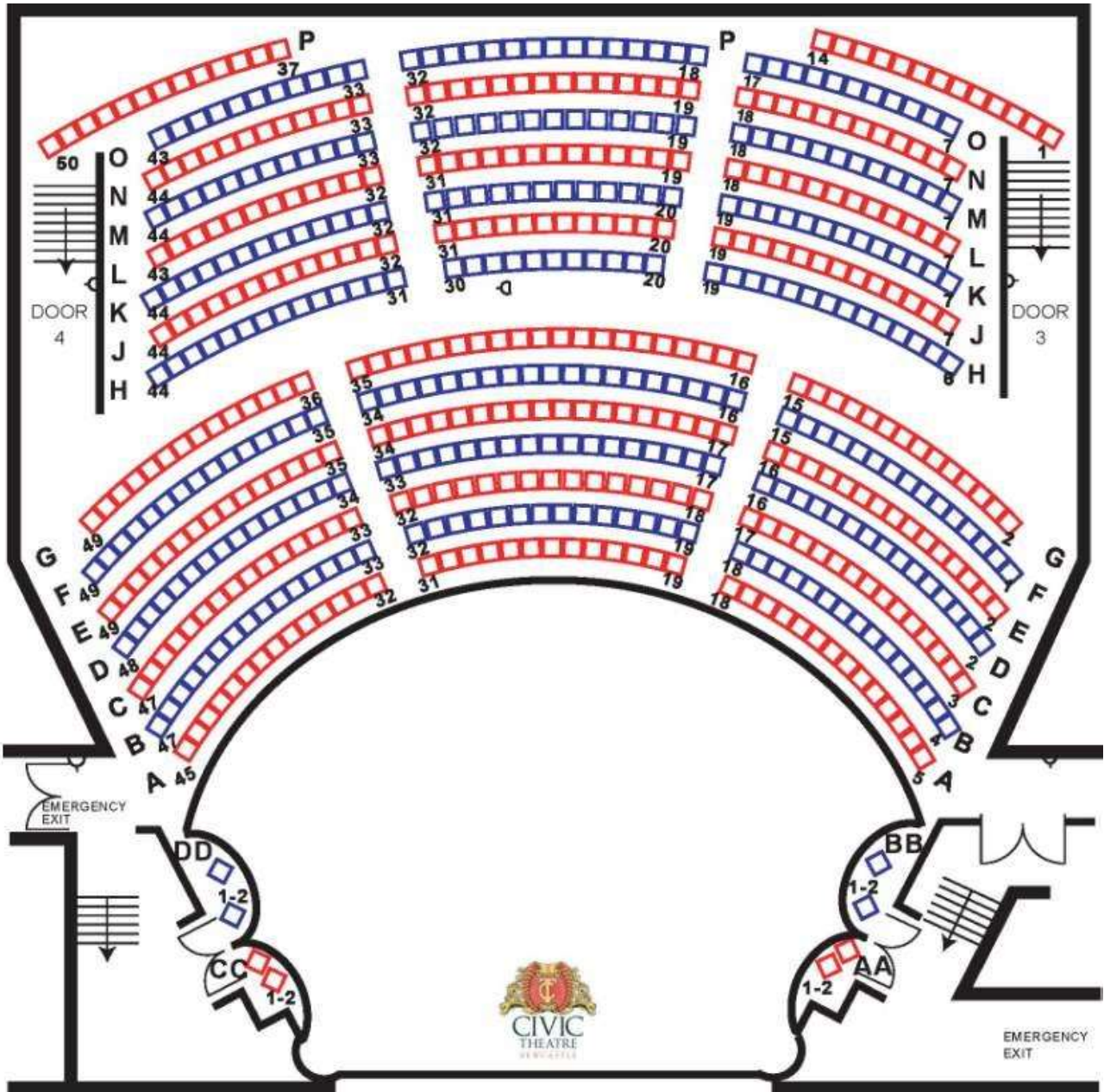
Stalls – O19-28, P19-26 Total of 16 seats

Sound Mix Position # 2 – Rear of Stalls

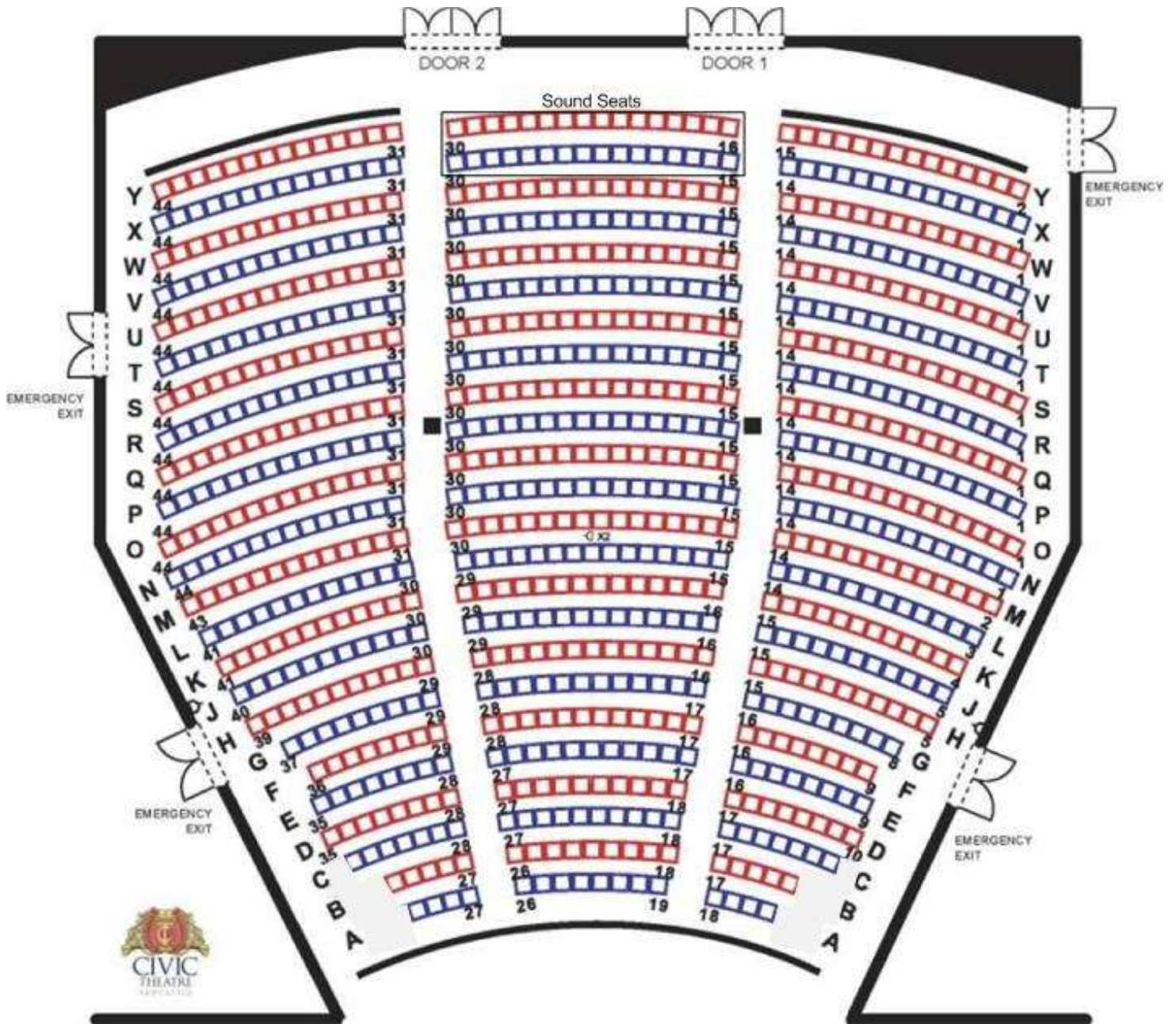
Stalls X19-27, Y19-27 Total of 18 seats



Dress Circle

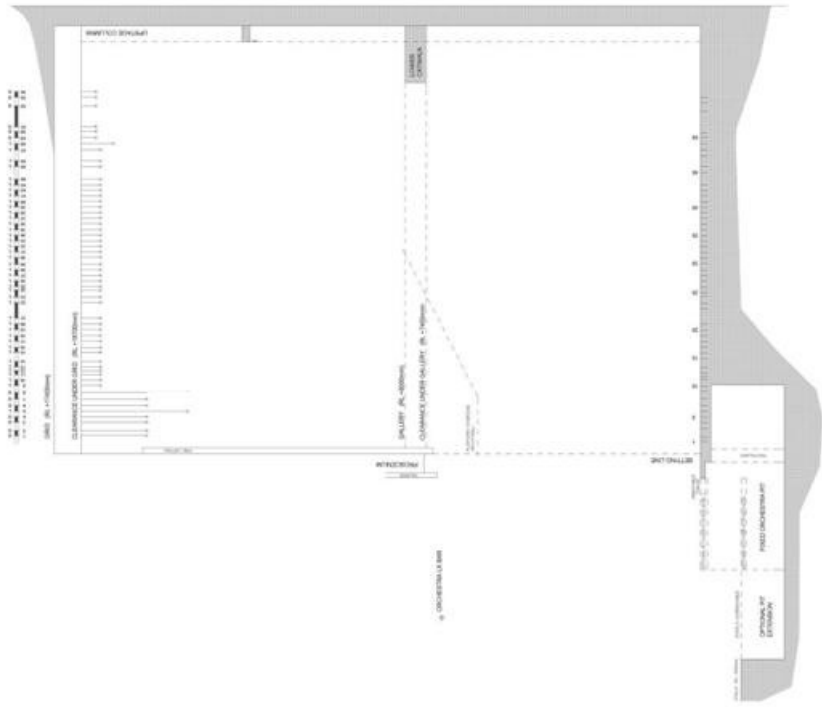


Stalls



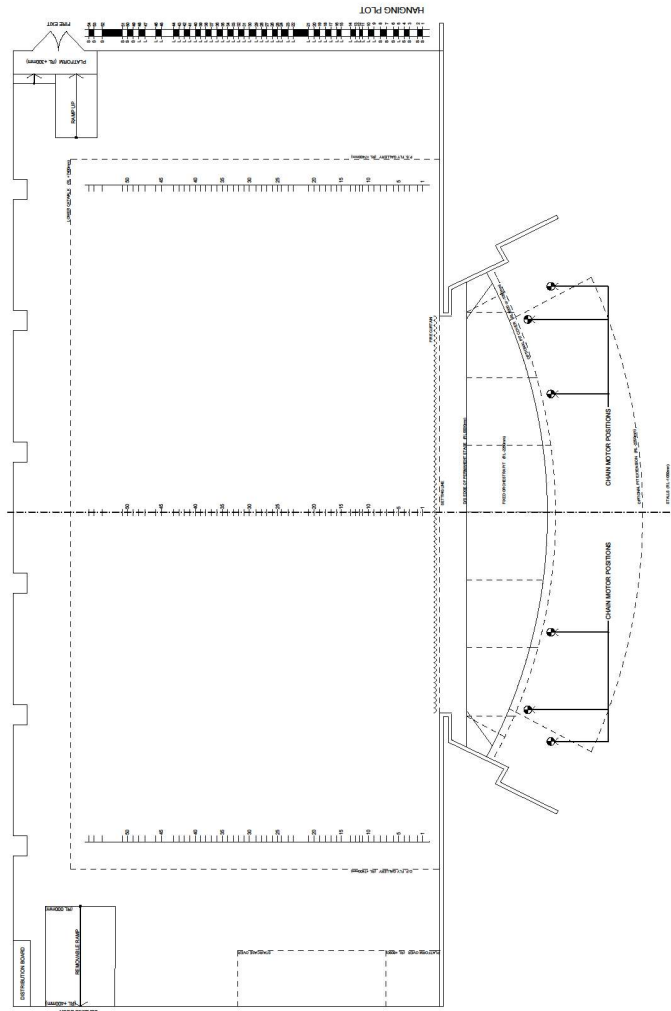
Vertical Stage Dimensions

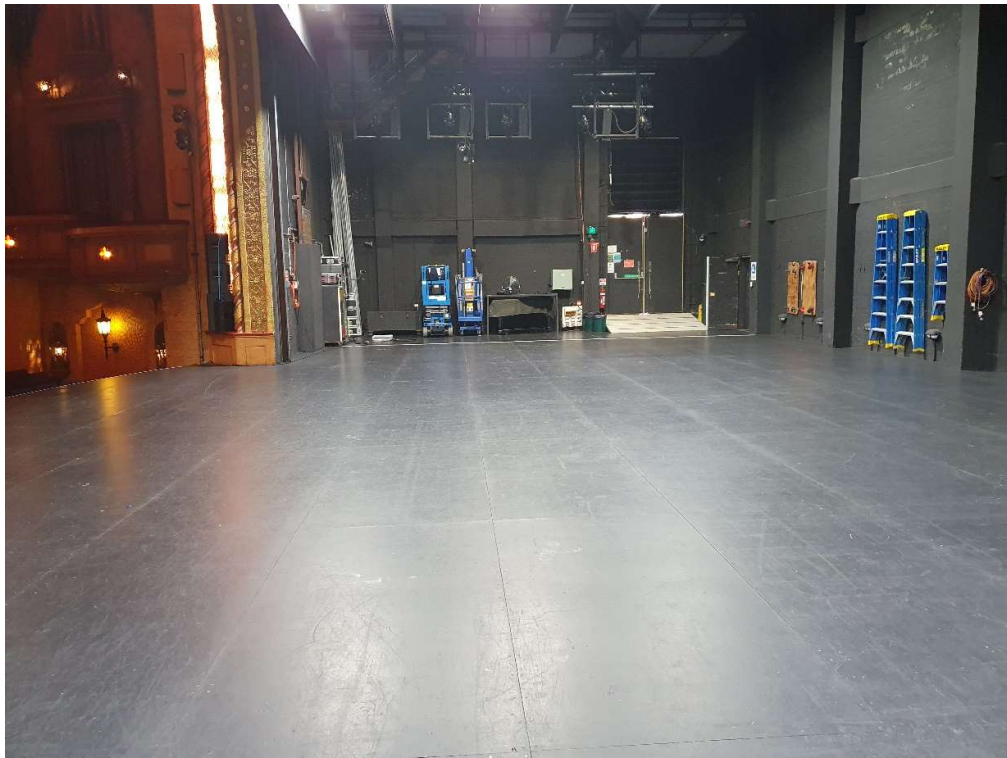
Level	Height	Notes
1		
2		
3		
4		
5		
6		
7		
8		
9		
10		
11		
12		
13		
14		
15		
16		
17		
18		
19		
20		
21		
22		
23		
24		
25		
26		
27		
28		
29		
30		
31		
32		
33		
34		
35		
36		
37		
38		
39		
40		
41		
42		
43		
44		
45		
46		
47		
48		
49		
50		
51		
52		
53		
54		
55		
56		
57		
58		
59		
60		
61		
62		
63		
64		
65		
66		
67		
68		
69		
70		
71		
72		
73		
74		
75		
76		
77		
78		
79		
80		
81		
82		
83		
84		
85		
86		
87		
88		
89		
90		
91		
92		
93		
94		
95		
96		
97		
98		
99		
100		



Horizontal Stage Dimensions

civic theatre newcastle technical services department		Project: MUSIC		NO. 1		DATE: 11/11/2004	
Comments:							
1	2	3	4	5	6	7	8
9	10	11	12	13	14	15	16
17	18	19	20	21	22	23	24
25	26	27	28	29	30	31	32
33	34	35	36	37	38	39	40
41	42	43	44	45	46	47	48
49	50	51	52	53	54	55	56
57	58	59	60	61	62	63	64
65	66	67	68	69	70	71	72
73	74	75	76	77	78	79	80
81	82	83	84	85	86	87	88
89	90	91	92	93	94	95	96
97	98	99	100				
Scale:		1:50 @ A1		SHEET NO. 3		PAGE 3 OF 4	
DRAWING:		STAGE PLAN + HANGING PLOT		DATE:		APRIL 2004	
PROJECT:		MUSIC		DRAWING:		CIVIC THEATRE LIGHTING DIAGRAMS	
civic theatre newcastle							





Stage Dimensions

Maximum capacity onstage is 144

Proscenium

Width	11000mm
Minimum width	10820mm
Height of Proscenium Opening	7500mm
Height to bottom of Fire Curtain	7250mm
Height to bottom of fixed front valance	7050mm

Stage Depth

Setting line:	
To DS edge of stage	685mm
To last line	9790mm
To back wall columns (4 of)	11140mm
To back wall	11500mm
To DS edge of thrust at centre line	3060mm
DS edge of thrust radius (approx.)	14500mm
Front of thrust arc width	13400mm

Stage Width

OP wall to fly locking rail	26000mm
-----------------------------	---------

Stage entry door/Prompt fire egress

Located US Prompt/must remain unobstructed	
Height	2060mm
Width	1620mm
2 steps down to stage	

Fire Curtain

Steel drop directly upstage of Pros/Setting Line	
Depth of curtain	160mm

Must remain unobstructed / **must be dropped nightly**

Grid/Fly Tower

Height to the underside of Grid	17380mm
Height to the underside of Fly Galleries	7400mm
Distance between Galleries	19400mm
Height to the underside of US catwalk	9060mm
Setting line to the DS edge of catwalk	10000mm

Stage Surface

Flat/sprung floor on timber rafters/joists
Masonite on plywood
Distribution load (Aust Standard Approved) 7.5KPA
Concentrated load (Aust Standard Approved) 4.5KN
Painted flat black

Stage loading dock door/OP fire egress

- Upstage OP/SR – 1800mm movable ramp from lane outside 450mm down to stage level
- Door max opening 2120mm width x 3000mm high with extra door above to max height of 5300mm

Rigging / Fly System

Fly System

Single purchase counterweight system
Operated from stage level PS
54 Line Sets

Flown sound rigging points 2 x– 1000kg SWL

Distance from centre to audio points 5430mm
Horizontal distance from setting line 2400mm

Note: flown PA sits below catwalk truss

Note: Grid / Fly Tower total loading not to exceed 12,000kg

45 Long Cradles

- Maximum Drift 16500mm
- Maximum Capacity 400kg

9 x Short Cradles

Maximum Drift 15150mm DS
16500mm US
Max capacity 300kg
400kg with slave

Head Battens

All battens are RHS 50mm x 100mm
Length of barrels 18000mm
5 x 6mm FSWR pick ups
Pick up points Centre, 3700mm, 8000mm

Electric Spot Bars

4 x pre wired LX bars (length) 15000mm
1 x pre wired LX cyc bar (length) 15000mm

Panorama Masking

4 x 500kg motors (2 per side)
2 x 9m tri truss (1 per side) in wings

Onstage motors

4 x 1000kg motors for use onstage

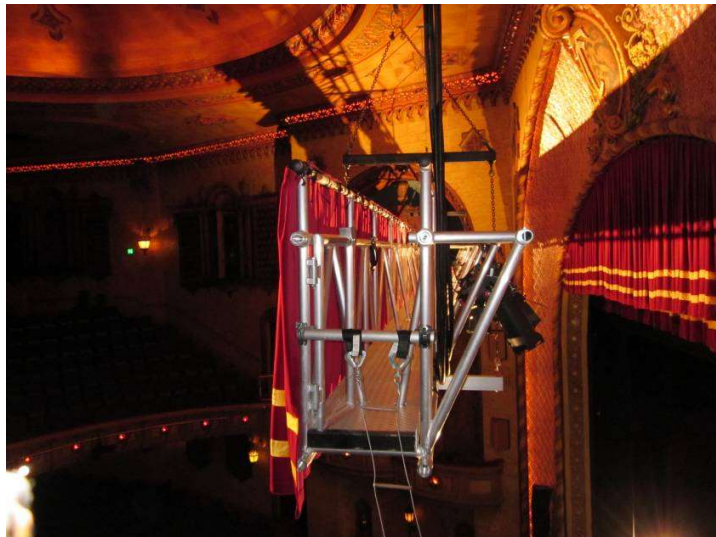
Orchestra Pit LX Bar - 2 x points – 1000kg SWL

Catwalk truss (length) 11000mm
Min vertical distance bottom catwalk truss
to stage 7000mm
Minimum vertical distance barrel
to stage 7900mm
Horizontal distance from setting line 3000mm
Distance from centre to pick ups 3375mm
Vertical to stage 9000mm

Side Lighting Ladders

8 x units (4 per side)
Tracked from under OP/Prompt Galleries
Length of track from DS setting line
to US 8500mm
Distance from stage to top lamp 7000mm
Distance from stage to bottom lamp 4700mm

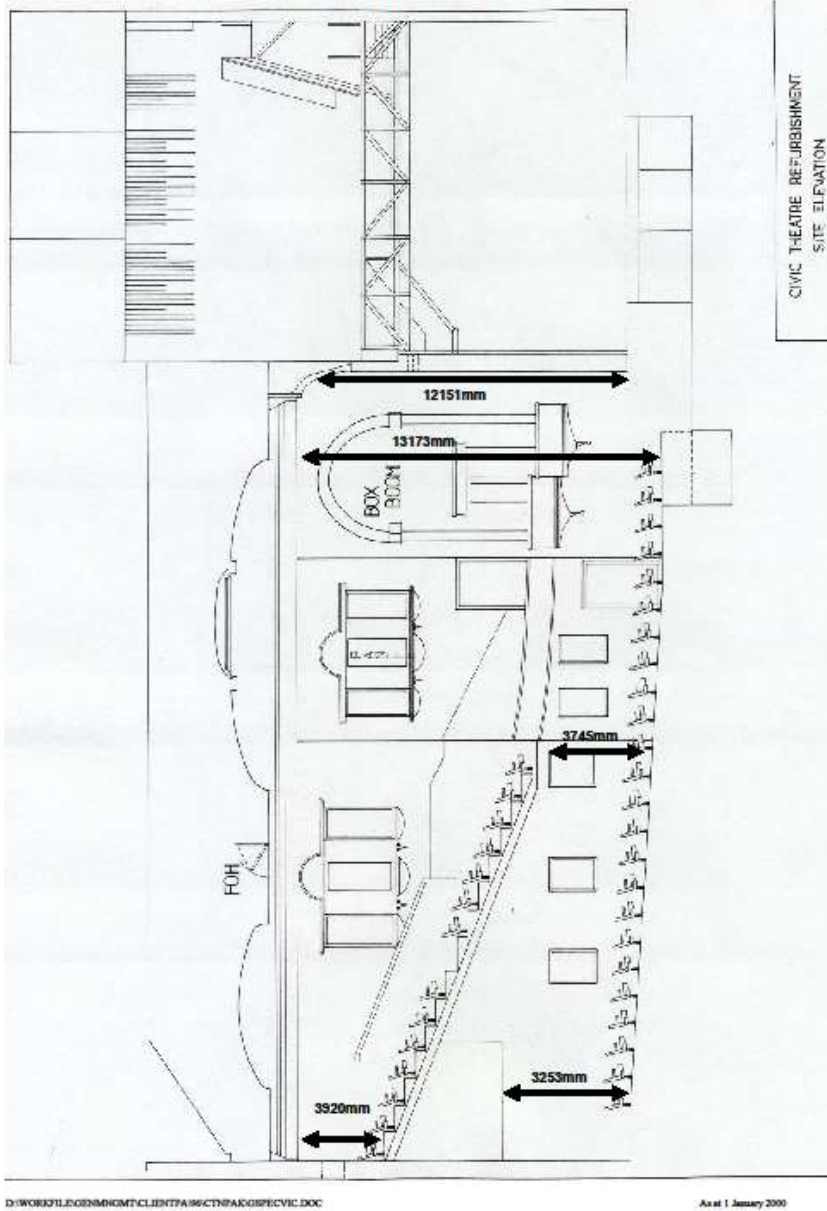
****NB. Moving lights cannot direct its beam from the cantilevered lighting bar on the truss back into the auditorium. Under slung pipe can be rigged which enables this. Truss will not be de-rigged from standard without prior arrangement. ****



Auditorium Side View (Elevation)

CTN CLIENT KIT:
TECHNICAL SERVICES INVENTORY (PLEASE RETAIN)

CIVIC THEATRE NEWCASTLE AUDITORIUM SIDE VIEW



Hanging Plot Standard Rig

Line No.	Distance from Set Line (mm)	Between Bars (mm)	Drift Out (m)	Standard Rig	Show Specific	Notes
1	360		16.3	House Curtain		
2	700	340	15.1	Border		
3	825	125	15.1	Legs		
4	980	155	13.8			
5	1125	145		LX 1		
6	1290	165	13.8			
7	1435	145	15.1			
8	1600	165	15.1			
9	1760	160	16.5			
10	1910	150	16.5			
11	2075	165	16.5			
12	2225	150	16.5			
13	2375	150	16.5	Border		
14	2535	160	16.5	Legs		
15	2680	145	16.5			
16	2840	160	16.5			
17	2990	150	16.5	LX 2		
18	3150	160	16.5			
19	3305	155	16.5			
20	3455	150	16.5			
21	3590	135	16.5			
22	3965	375	16.5	Border		
23	4105	140	16.5	Legs		
24	4265	160	16.5			
25	4455	190	16.5	LX 3		
26	4620	165	16.5			
27	4775	155	16.5			

28	4935	160	16.5			
29	5090	155	16.5	Black Tabs - Track		
30	5235	145	16.5			
31	5395	160	16.5			
32	5545	150	16.5			
33	5700	155	16.5	Border		
34	5860	160	16.5	Legs		
35	6005	145	16.5			
36	6165	160	16.5			
37	6320	155	16.5	LX 4		
38	6480	160	16.5			
39	6625	145	16.5			
40	6785	160	16.5			
41	6940	155	16.5			
42	7095	155	16.5			
43	7235	140	16.5	Border		
44	7355	120	16.5	Legs		
45	7700	345	16.5	LX 5		
46	8125	425	16.5			
47	8295	170	16.5			
48	8450	155	16.5			
49	8600	150	16.5			
50	8740	140	16.5			
51	9335	595	16.4			
52	9480	145	16.4	Black Gauze		
53	9630	150	16.4	Cyclorama		
54	9775	145	16.4	Black Smother		

Pit Extension / Thrust Ancient

8 - Independent sections with 4 levels each

Plywood / Masonite / steel construction

- 1- stage level 00mm below stage level
- 2- stalls level 1,050mm below stage level
- 3- riser level 1,950mm below stage level
- 4- fixed pit 2,250mm below stage level

Draperies

Main Curtain

1 unit - 14,000mm x 8,000mm

Positioned on line set #1 **Must be used on line # 1**

- Red
- Guillotine action; manually operated from prompt
- And tab action; motor driven variable speed
- Split at centre

Sets of Blacks # 1

5 sets

- 5 x borders 18,000mm x 4,000m
- 10 x legs 4,500 mm x 8,000mm

Black Tabs - (split at centre)

- 1 unit - 18,000mm x 8,000mm
- 1 unit - 17,000mm x 8,000mm on Tab Track

White Cyc

1 unit - 18,000mm x 7,500mm

Old House Curtain – Red Velvet

1 Unit – 14,000mm x 8,000 mm

Black Scrim

1 unit - 18,000mm x 7,000mm

Various other cloths available upon enquiry

Power / Dimmers

Distribution

OP U/S Wing

100 amps per phase outlet with a distribution board
2 x 32amp 3phase – 5 pin wilco
4 x 20amp single phase – 3pin large earth pin
4 x 10amp single phase – double GPO

Powerlock

200 amps per phase
US OP

PS DS wing

100 amps per phase
Powerlock connection 10 metres up on gallery level
With a distribution board at stage level:
2 x 32amp 3phase – 5pin Wilco
4 x 20amp single phase – 3pin large earth pin
4 x 10amp single phase – double GPO

DS OP (Audio power)

32amps – 5pin Wilco outlet with a distribution board
1 x 32amp – 5pin Wilco
3 x 10amp – double GPO

House Lights

Controlled from Bio Box from 8 preset controller with variable presets, auxillary controls at Stage Managers Console PS, FOH trap and FOH in main foyer.

Standard House Light Presets

Preset 1 – House Lights 100% (5 seconds)
Preset 2 – House Lights 75%
Preset 3 – House Lights 50%
Preset 4 – House Lights 25%
Preset 5 – House Lights full – no arch
Preset 6 – Custom Preset
Preset 7 – Custom Preset
Preset 8 – House Lights Out (7 seconds)

Dimmers (portable)

Bytesize dimmers version 8.13 (total 48 x 2.4Kw)
DMX 512 protocol

Dimmers (fixed)

Bytesize Dimmers version 8.13 (total 300)
228 x 2.4Kw 72 x 5.0Kw DMX 512 protocol

Orchestra Dimmer

Total 2 x 5.0Kw Controlled from SM console
Auxillary control PS of pit

LSC APS Power Units

5 x power distribution units on PS Gallery
1 x power distribution unit at truss roof point

Lighting

Control Desks

(NB: CTN venue hire only includes one console, please confirm console selection with Technical Coordinator)

ETC GIO console, 4096 channels,
2 x touch screens

1 x fader wing with 40 submasters

ETC Ion XE console 12,288 channels

2 x Dell 23" touch screens

1 x fader wing with 40 submasters

1 x wireless focus remote using Ipad

Data Distribution

2 x Jands DD8 splitters

4 x Pathport 8-way optical DMX splitters - RDM supported

2 x ETC Net3 Gateways

1 x PoE Network switch (sACN network)

Data Codes

Protocol DMX 512 / sACN

DMX Distribution (star from dimmer room)

Inputs Bio Box, Stalls, Gallery OP., Gallery PS, Stage OP, Stage PS, Row N Stalls, Dress Circle

Outputs Gallery OP, Gallery PS, Stage OP, Stage PS, Row N Stalls, Dress Circle
Bio Box, Lx1, Lx2, Lx3, Lx4, FOH Truss, Ladder positions, Onstage Dip-traps

Cat6 Distribution (star from dimmer room)

Bio Box, Stalls, Gallery OP, Gallery PS, Stage OP, Stage PS, Row N Stalls, FOH Truss

Lamp Stock

30 x ETC D60 Lustre+ LED Wash fixtures

12 x Martin MAC Aura LED wash fixtures

10 x Altman Spectra Cyc-200 LED fixtures

16 x Source 4 LED Series 3 (5°, 10° & 2 x 14° lenses available) **not to be moved from FOH**

6 x Source 4 LED Series 3 (14°, 19° & 26° lenses available) **not to be moved from FOH**

20 x ETC Source-4 LED 2 (10@19° 10@26°) **not to be moved from ladder position**

4 x ETC Source-4 LED 2 (various lens' available)

70 x 1.0 Kw 14/35 Pacific Selecon ("B")

2 x 1.0 Kw 45/75 Pacific Selecon Profile ("B")

12 x 2.0Kw Alto fresnels

48 x 1.2Kw Selecon Rama fresnel with Barndoors

40 x 1.0Kw Kupo 240volt Par Cans

1 x 3.0Kw Martin Atomic 3000 DMX Strobe

1 x 2.0Kw Geni FL1800D Dmx Golden Strobe

4 x 50w 3cts Mini strips under 2Kw per circuit

4 x Epar UV light LED Pars (DMX control)

Follow Spots (Charges apply)

2 x Robert Juliette Arthur LED Followspots 5.5 – 15 degree

Hazers (Charges apply)

2 x unique hazers

Lighting Continued...

Accessories

2 x Winch Up Floor stands 18'
 10m Aluminum Tri truss
 10 x 3.3m booms / wheelbases
 4 x T stands, push up
 50 x Boom arms
 8 x Boom Base
 All lamps are complete with gel frames
 Multi cable / 4cct Wieland, looms, singles

Lighting Positions/Dimmer Circuits

Lighting Position	No. Of Outlets	Dimmer No	No. Of Dimmers	Capacity	
F.O.H.:					
Main Slot	18	1 - 18	HOT	2.4Kw 5Kw	
PS Star	3	19 - 21	HOT	2.4Kw	
OP Star	3	22 - 24	HOT	2.4Kw	
Box Boom:					
PS Panel	6	25 - 30	HOT	2.4Kw	
OP Panel	6	31 - 36	HOT	2.4Kw	
PS Box Boom	6	37 - 42	6 x	2.4Kw	
OP Box Boom	6	43 - 48	6 x	2.4Kw	
Circle Front	12	49 - 60	12 x	2.4Kw	
Orchestra Bar	30	61 - 90	30 x	2.4Kw	
Footlights	6	91 - 96	6 x	2.4Kw	
L X Bar 1	24	97 - 108 109 - 120	18 x 6 x	2.4Kw 5.0Kw	37 patches
L X Bar 2	24	121 - 132 133 - 144	12 x 12 x	2.4Kw 5.0Kw	37 patches
L X Bar 3	24	145 - 156 157 - 168	12 x 12 x	2.4Kw 5.0Kw	37 patches
L X Bar 4	24	169 - 180 181 - 192	12 x 12 x	2.4Kw 5.0Kw	37 patches
L X Bar 5 (Cyc)	24	193 - 204 205 - 216	12 x 12 x	2.4Kw 5.0Kw	4 groups of 4 patches + 22 patches

Prompt Fly Gallery

D/S	6	229 - 234	6 x	2.4Kw	
M/S	6	235 - 240	6 x	2.4Kw	
U/S	6	241 - 246	6 x	2.4Kw	
Back	6	247 - 252	6 x	2.4Kw	

O.P. Fly Gallery

D/S	6	253 - 258	6 x	2.4Kw	
M/S	6	259 - 264	6 x	2.4Kw	
U/S	6	265 - 270	6 x	2.4Kw	
Back	6	271 - 276	6 x	2.4Kw	

PS - Floor Traps

D/S	6	277 - 282	6 x	2.4Kw	
M/S	6	277 - 279	3 x	2.4Kw	3 patches from D/S
		283 - 285	3 x	2.4Kw	
U/S	6	277 - 279	3 x	2.4Kw	3 patches from D/S
		286 - 288	3 x	2.4Kw	
G/R	6	217 - 222	6 x	5.0Kw	

OP - Floor Traps

D/S	6	289 - 294	6 x	2.4Kw	
M/S	6	289 - 291	3 x	2.4Kw	3 patches from D/S
		295 - 297	3 x	2.4Kw	
U/S	6	289 - 291	3 x	2.4Kw	3 patches from D/S
		298 - 300	3 x	2.4Kw	
G/R	6	223 - 228	6 x	5.0Kw	

Sound

Power

1 x 40 amp 3 phase (5 pin wilco) / Located DS OP / Separate Earth

Consoles/ Racks / Control Processor

(NB: CTN venue hire only guarantees access to one console, please confirm console selection with Technical Manager)

- 1 x DiGiCo SD12 with 72 Input Channels, 36 Aux / Sub-Group Busses
- 1 x DiGiCo SD9 Stealth Core 2 with 96 Input Channels, 48 Aux / Sub-Group Busses

- 1 x DiGiCo D2 Rack MAD1 I/O 48 inputs, 16 outputs
- 1 x DiGiCo D-Rack, 32 in, 8 analogue out, 4 AES out
- 1 x DiGiCo D-Rack, 32 in, 16 analogue out
- 1 x DiGiCo LRB & LBB bnc/cat5 split/conversion

- 1 x Meyer Galileo GALAXY 816-AES3 with Compass control option
- 1 x Meyer Galileo 616 with Compass control option

Speakers Meyer equipment available at additional cost (As per Contract)

4 x	Meyer UPQ-D1 (Main PA)	
2 x	Meyer UPJ-1P (In fill)	<i>Supplementary Stock</i>
4 x	Meyer 900-LFC (Subs)	6 x Meyer UPA-1P speakers
4 x	Meyer UPM-1P (under balcony fill)	2 x Meyer UPA-2P speakers
4 x	Meyer UPM-1P (front/lip fill)	2 x Meyer USW-1P sub speakers
2 x	Meyer USM-100P (15" wedges)	
4 x	NEXO PS10 speakers + analogue (2 x stereo Yamaha P7000 amplifiers)	
4 x	NEXO PS15 speakers + digital DTD controller (2 x CAMCO D-Power4 amplifiers)	

Playback

2 x	MacBook Pro with Qlab installed (Charges apply)
1 x	Denon DN 635 Compact Disc player
1 x	Denon DN-T625 CD/ Tape

Recording

1 x Tascam RS-200 digital 2 track recorder (SD card/compact flash/usb)

Microphones

8x	Shure	SM58	2x	AKG	C568EB	(Mini Shotgun)
6x	Shure	BETA58	2x	Rhode	NTG-2	(Shotgun)
6x	Shure	SM57	4x	Rhode	NT5	
1x	Shure	BETA57	2x	CAD	95	
1x	Shure	BETA52A	4x	Crown	PCC160	(Boundary)
1x	Beyerdynamic	M-88TG	2x	AKG	C680	(Boundary Layer)
1x	Sennheiser	e901	4x	DPA	4098H	(Super Cardioid Hanging)
5x	Sennheiser	e904	2x	DPA	SC4098	(Super Cardioid Lectern)
4x	Sennheiser	e906	1x	Shure	MX 412s	(Super Cardioid Lectern)
2x	Sennheiser	e908B	1x	Shure	SM99	(Cardioid Lectern)
4x	AKG	C535EB	5x	LA Audio	DI 2 mk3 active DI	
2x	AKG	C480	4x	Radical	J48 active DI	
2x	AKG	CK391	2x	Radical	JPC stereo PC	DI active outputs
			2x	Art	Dual Passive	Direct 30x

Microphone Stands

9 x	Beyerdynamic Short Boom Stands
12 x	Beyerdynamic Boom Stands
8 x	Beyerdynamic Straight Stands (tripod base)
3 x	Chrome round base straight stands
6 x	Black round base straight stand

Patching

40 + 12 lines in the Auditorium: 1 x Set at the Rear / Centre of the Stalls
40 + 12 x lines in the Control Room
104 Tie Lines around Stage and Pit
Main patch bay in the D.S.O.P Area
All XLR plugs are Pin 2 Hot

Cat 6e double shielded ethercon for DiGiCo SD9/SD12

2 x Rear stalls, 2 x Mid stalls, 2 x Orchestra pit, 2 x Dress circle, 2 x Upstage centre, 2 x Downstage prompt trap. All cables run to patch bay downstage OP with audio patch bay.

Cores and stage drop boxes

1 x 12 way 15m
4 x 8 way 15m
2 x 4way 10m

Multi cable runs

Multi cables run from downstage prompt orchestra pit to rear of stalls via 150mm PVC pipe. Approx. 50m from stage wings to FOH via PVC pipe.

Cable Run Measurements from setting line

To Centre of Stalls	Sound mix position # 1	25,000 mm
To Rear of Stalls	Sound mix position # 2	45,000 mm

Flown sound rigging points 2 @ 1000kg

Distance from centre to audio points	5430mm
Horizontal distance from setting line	2400mm

Note; flown sound sits below catwalk truss, bottom of truss at 7000mm above stage, (8050mm above auditorium floor) at standard, 8500mm above stage at high dead. Flown PA will cause some sight line issues.

Ground stacks/ subs will cause some sight line issues

UHF Wireless Microphones

The Civic Theatre has 16 UHF Microphone Systems. These are Sennheiser Evolution G3 100 series. All systems are 626-668MHz, Sennheiser Group B. They are divided into 2 racks of 8 systems. **Each system is charged as per contract rates and charges.**

These 16 systems include:



- Receiver Unit (sennheiser EM100 G3)
- Power supply (sennheiser power distribution 12vdc 410mA)
- Handheld Microphone (16 x Dynamic = SKM 845 optional 2 x MMD 945 capsules)
- Beltpack transmitter (16)
- Lapel Microphone (6 x AKG C417 III TL Omnidirectional)
(16 x Sennheiser ME 2 Omnidirectional)

*NB. Only 1 of the microphones within each system may be used at any one time (ie. handheld or lapel/head worn)



16 x DPA 4066 adjustable head worn microphone available at an additional cost.

The systems re pre-tuned and divided, as follows;

Civic 1	626.000MHz	Civic 9	635.825MHz
Civic 2	627.100MHz	Civic 10	638.500MHz
Civic 3	628.150MHz	Civic 11	639.075MHz
Civic	4629.625MHz	Civic 12	641.725MHz
Civic 5	631.300MHz	Civic 13	643.200MHz
Civic 6	631.650MHz	Civic 14	647.125MHz
Civic 7	633.975MHz	Civic 15	649.300MHz
Civic 8	634.725MHz	Civic 16	649.700MHz

There are also 6 x Sennheiser EW100 G3 wireless systems used in the City Hall, which is part of the Civic Precinct. They are pre-tuned as follows:

Banquet room	653.000MHz
Cummings room	656.450MHz
Hunter room	658.250MHz
Fort Scratchley	661.250MHz
Concert Hall #1	662.300MHz
Concert Hall #2	663.050MHz

Another 4 x Sennheiser EW500 G4 wireless systems are also used in City Hall and are pre-tuned as follows;

- City Hall G4 Rack 1
- City Hall G4 Rack 2
- City Hall G4 Rack 3
- City Hall G4 Rack 4

Summary

There are a total of 16 wireless systems, which can use any combination of the mic's listed below. (Handheld or Lapel / DPA headset)

There are 16 handheld mic's (Sennheiser SKM 845)

There are 16 lapel style clip on mic's (Sennheiser ME 2)

There are 16 head worn mic's (DPA 4066F omnidirectional)

There are 6 lapel style clip on mic's (AKG C417 III TL – omnidirectional)

There are 4 Plug on transmitters for use on any dynamic/condenser microphone (+48v XLR)

There are 2 interchangeable capsules (Sennheiser MMD 945 for the SKM 845)

Audio-Visual (additional cost)

1 x Stumpfl 16 ft 16:9 aspect fast fold monoblox 64 front or rear projection projector screen.

1 x Stumpfl 22 ft 16:9 aspect fast fold monoblox 64 front projection projector screen.

SDI links from rear stalls, bio box, fly galleries, FOH truss.

2 x 12K Panasonic laser projectors with various lenses.

Please confirm cost and availability with Technical Services.

Stage Manager Console

Location

Located DS Prompt

This is a touch screen system with paging to all dressing rooms and foyers, and talkback

Talkback

Talkback System Jands E400 EasyCom. System

Master station at SM console DS Prompt

4 Loop Talkback with 34 outlets

4 Way 20 line matrix switcher

Headsets	8	Beyer DT 108 Single can,	4 Beyer DT 280
	9	Beyer DT 109 Double cans,	6 Beyer DT 290
	10	Beltpacks - Jands E100	

(not including ops positions – SMC / FLY's / FOH audio / BIO BOX LX / Domes

Wireless Comms

1 x Ridel Bolero Wireless Network

8 x Ridel Bolero wireless packs & headsets

Cameras

2 x Face of the Dress Circle on the Centreline - 1 x lowlight, 1 x normal exposure switchable at SM console

1 x portable MD / monitor CAM

Dressing Rooms

All come with full ensuite facilities, air conditioning / heating, paging and program relay audio.

Capacities are based on maximum mirror positions.

Dress #	Level	Capacity	Location
1	Stage level	4	U/S
2	Stage level	4	D/S
3	Stage level	4	D/S
4	1 st Floor	12	US - Stairwell end
5	1 st Floor	6	
6	1 st Floor	6	
7	1 st Floor	4	
8	2 nd Floor	12	US - Stairwell end
9	2 nd Floor	8	
10	2 nd Floor	10	
11	2 nd Floor	4	

Mezzanine

Maximum capacity is 50
 Above crossover directly behind main stage
 Can be reconfigured depending on production. Hard floor, air conditioning.
 Preferred room for makeup / body paint application.

Orchestra Assembly Room

Located Prompt at Orchestra Pit level
 Air conditioned/heated
 Wall mirrors

Complete with tables/chairs/wardrobe racks
 Suitable for max twenty (20) persons

Green Room

Located third level dressing room / promenade level
 Paging and program relay
 Stage monitor / television

Tea making facilities
 Small refrigerator
 Chairs/lounges

Laundry

2 x washing machines
 3 x tumble dryers
 1 x steam iron

1 x emergency sewing box
 4 x portable wardrobe racks
 1 x ironing board

Production Office

Located in stage door corridor - maximum capacity is 6.
 1 x fridge
 1 x freezer
 1 x microwave
 Internet

Trap Room

Located directly upstage of Orchestra pit
 Height of room
 Depth US from setting line
 Width (although varies)

2050mm/17500mm
 3000mm
 12000mm

No traps
 Poured concrete floor
 Access from prompt
 Used as storage for auditorium seats/Civic lamps

Orchestra Pit

Small pit - max capacity 18

Rear wall to centre DS edge 4900mm
 Rear wall to PS DS edge 4150mm
 Maximum width 9400mm
 Depth below stage 2250mm

Large pit - max capacity 30

Rear wall to centre DS edge 7300mm
 Rear wall to PS DS edge 6650mm
 Maximum width 12000mm
 Depth below stage 2250mm

Loading Dock

Loading Door

Located US OP
 Ramp down to stage surface from
 door/street level 400mm
 Max width 2130mm
 Height of lower door 3006mm
 Height of upper door 5400mm

Our truck ramp dimensions

Length 5000mm
 Width 1000mm
 Edge height 50mm x 50mm

Other Equipment

Pianos

1 x Black Yamaha 6' Conservatory Grand

Treads (2 sets of two units)

Set #1

Treads from stage to auditorium – 900mm wide
 Black painted plywood on aluminium
 Fit into corner of stage/auditorium (no seats out)
OR fit into aisles (remove seats A18-19, A26-27)
 Pit cover/thrust must be at stalls or stage level

Set #2

1200mm wide Megadeck treads from stage to
 auditorium (some seats out), or on stage 2 x 300mm
 + 2 x 600mm or 2 x 900mm high

Handrails available

Mega Deck Risers – Subject to availability, check with Technical Services.

15 x 2400mm x 1200mm x 185mm
 Legs to finished heights; 300mm, 450mm, 600mm, 900mm

Ladders & Elevated Work Platforms

1 x 6.5m Upright MX-19 Elevated work platform
 1 x 10.0m Upright Airel Platform UL32
 1 x 0.9 m Fibreglass step ladder
 1 x 2.1m Fibreglass step/ ext. ladder
 1 x 2.4 m Fibreglass step ladder
 1 x 8.0 m Aluminium straight extension ladder

Chairs

40 x Black with backrest

Bar Stools

5 x Black with backrest
 6 x Black without backrest

Music Stands

30 x Adjustable metal stands
 35 x Sconces (25 of one style, 10 of a different style)
 2 x 20 circuit orchestra power loom

Trestle Tables

5 x Tables (2400mm x 750mm)
 1 x Production Table & Bench (2400mm x 600mm)



375 Hunter Street
Newcastle NSW 2300